

Sing a Song of Technology!

Mary Ellen Pinzino

(Association for Technology in Music Instruction 2003)

The Come Children Sing Institute **SONG LIBRARY** is a new integrated multimedia software tool for Music Educators. This CD-ROM based package integrates audio with text and graphic viewing capability within a single standalone software application. The package automates the arduous tasks routinely performed by music educators in planning curriculum and performance programs. It offers a fresh new paradigm for realizing productivity gains in delivering music education. In this first release, the target user group is teachers of preschool, elementary and children's chorus.

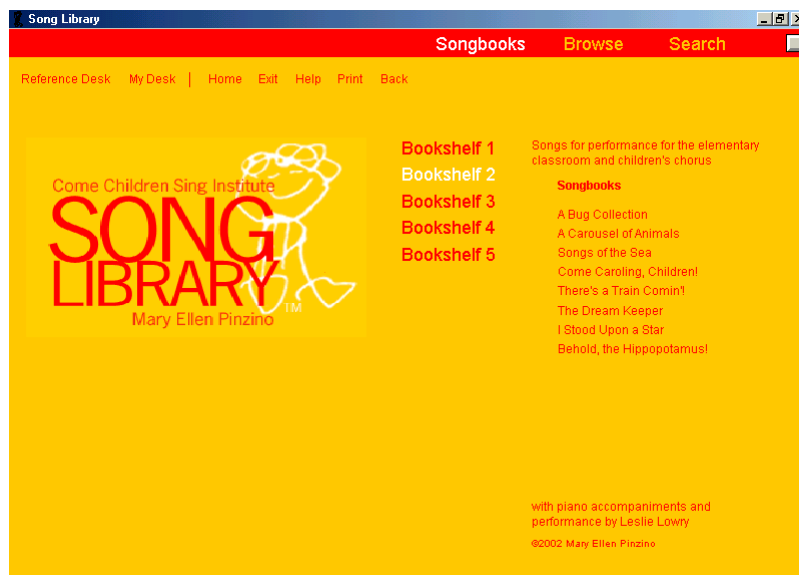


The core feature of the software package is an integrated database system which indexes a multipurpose library of over 500 songs selected specifically for children. The database contains highly detailed information on every song in the library with respect to professional concerns such as difficulty, vocal range, tonality, meter, and text origin. The database categorizations of the

attributes of each song in the library are tested and suited for ease of use by the major music education methodologies.

In addition to indices of song attributes important to music educators, each song in the library is directly linked to a graphic representation of the notation (Finale™ generated), and a midi performance of the score played on a Yamaha Disklavier acoustic/digital piano. The fact that the database components are integrated allows the music educator the opportunity to perform multiple indexed searches for material matched to learning objectives, view the score and lyrics on screen, and, optionally, listen to each song.

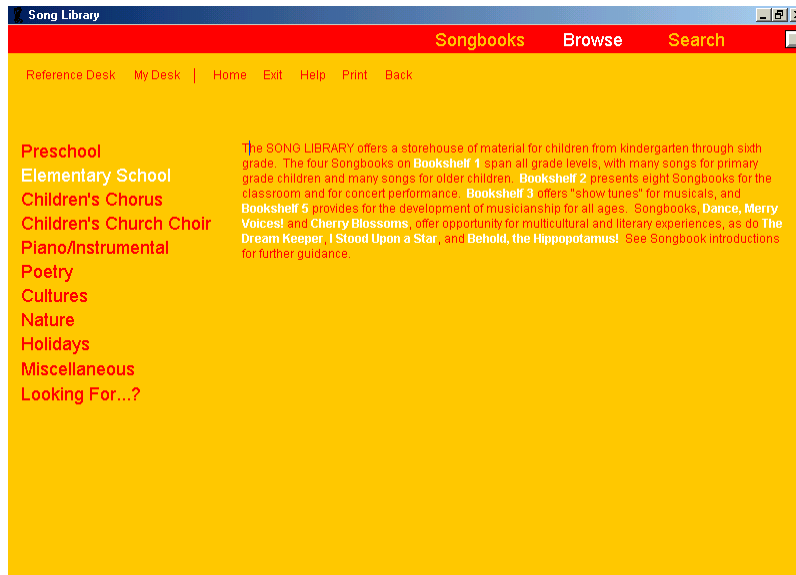
Key technical features of the system design include a music educator focused interface, compatibility on Mac and Windows platforms, the ability to print any score (camera ready) through standard platform resources, and the ability to build and print compilations of songs for classroom distribution or performance.



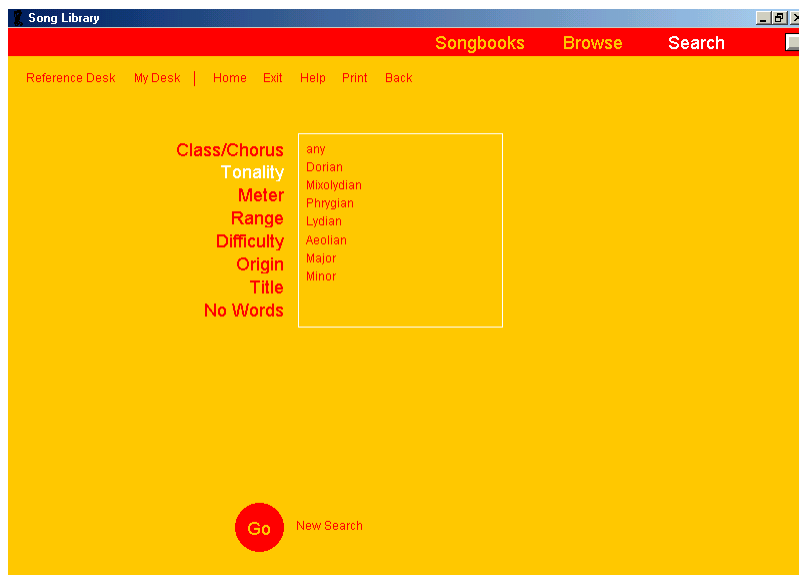
The package uses QuickTime™ and Adobe Acrobat Reader™ for video, graphics, audio and printing management. The CD-ROM is standalone; the latest versions of ancillary packages are included with the distribution disk.

In practice, the application streamlines the manual process of going through multiple stacks of music and songbooks to find appropriate songs for children. It enables teachers to electronically page through songbooks, browse the entire library by interest, and search for songs by class or chorus, difficulty, vocal range, tonality, meter, title, and text origin. Teachers can sort songs into various folders for lesson plans, concerts, future use, or make folders for each classroom. They can jot notes with any song to keep a record of when or how songs were used with any group of children.

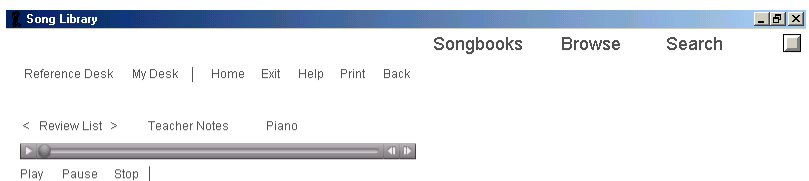
With this new software application, teachers can not only gain productivity with the electronic access of the notation and scholarly performance of more than 500 songs, they can advocate use of the package as a cost-effective alternative to the common practice of purchasing individual copies. The songs delivered by this package have been widely praised as fresh new content for music learning; the application offers a new system paradigm for libraries of music for instrumental and vocal solos, ensembles, and music education series books.



Browse to find songs that meet your educational priorities.



Search by multiple parameters to find songs that meet the musical needs of your children.



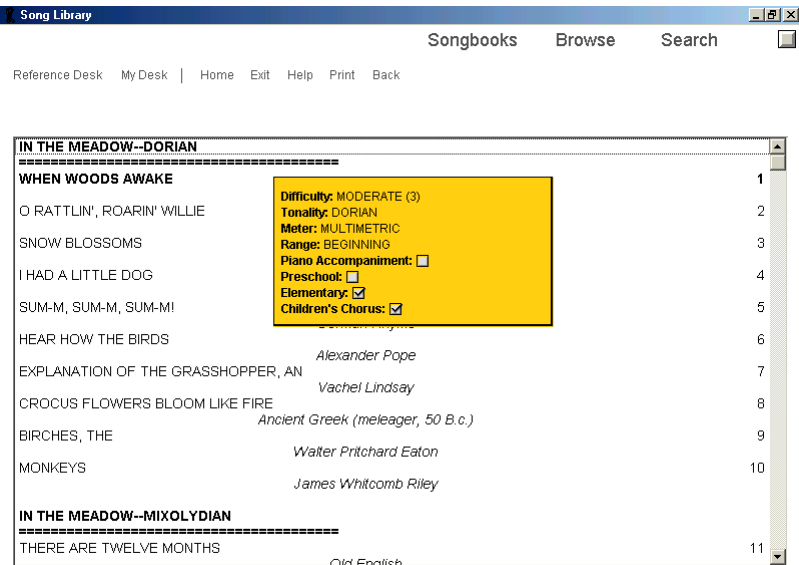
Penguin

MIXOLYDIAN
UNUSUAL UNPAIRED/DUPLE

MARY ELLEN PINZINO

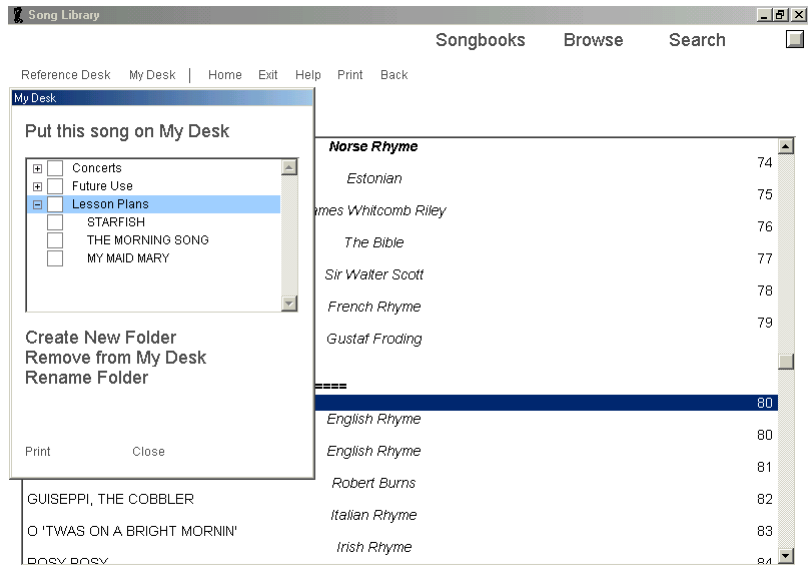
whether it was presented in concert. Click on piano to see, hear, and print the piano accompaniment.

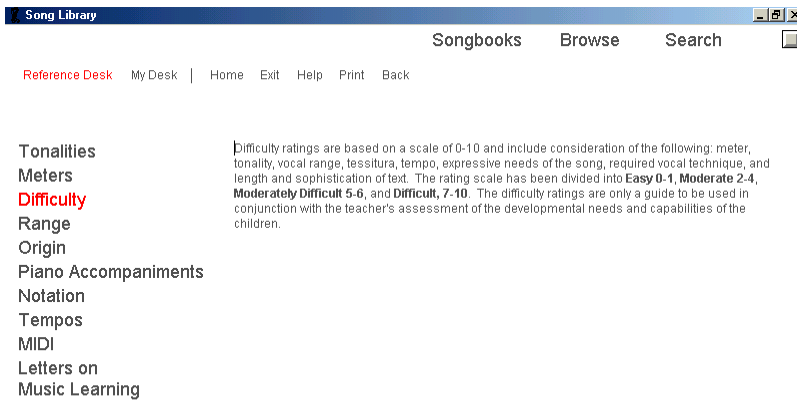
View the notation of each of the songs in the SONG LIBRARY, play the song, and print copies for classroom use. Click and drag the notation to adjust your view. Click the arrows of **<Review List>** to page the list of songs generated through Browse, Search, or Table of Contents. Click **Teacher Notes** to keep a record of when the song was used with a particular group of children, and



Place the pointer on any song in the list generated by Songbooks, Browse, or Search to display its various parameters that help to choose appropriate songs.

Click on **My Desk** from any list or notation and click on a folder to put songs in folders for lesson plans, concerts, or future use. Or, create a folder for each group of children. Print all songs in a folder from My Desk.





Click on **Reference Desk** to find out more about the classification and presentation songs.

The electronic SONG LIBRARY was developed at the Come Children Sing Institute, a center for research and development in music learning (www.comechildrensing.com). The conceptual design of the SONG LIBRARY CD-ROM software and user interface evolved through many years of teaching children and music teachers. Implementation of the design was done by Electronic Courseware Systems (www.ECSmedia.com).

© 2003, *Mary Ellen Pinzino*

Contact
Mary Ellen Pinzino

More by
Mary Ellen Pinzino